



A f t e r s a l e s   -   B o d y s h o p   -   W o r k s h o p   -   S a l e s

---

0. Index
1. About Us
2. Permanent Recruitment
3. Staff Retention
4. Staff Appraisals
5. Job Match
6. Our Clients
7. Advertising Campaigns

## About Us

We are here to build your future

All our consultants are affiliate members of the recruitment employment confederation & also practitioners of Personal Profile Analysis; we are strong believers in delivering the highest standards possible and therefore are adamant that all members of our team are adhering to the highest standards within the recruitment industry.



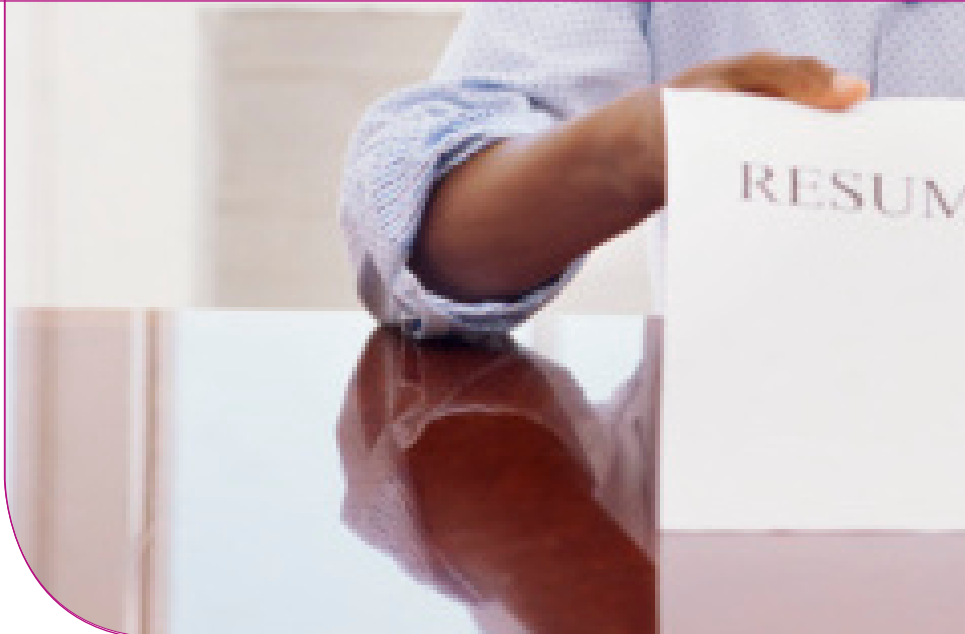
We are very firm believers in staff retention, we are not just here for you the client or candidate to feel that your next move is just a job, we are here to build your career along with retaining that career to the highest standards possible.

**“We have in excess of 10 years’  
recruitment  
and motor industry experience”**

## Permanent Recruitment

We know the market inside out

Due to the lack of recognition within the market area of quality personnel we are able to assess each of our candidates' work history along with what our client requires. We know that the industry has a lot of recruitment professionals that are not able to provide the blue chip service that is needed throughout the industry so that our clients and candidates are assured that their requirements are being fulfilled to the best of our ability.



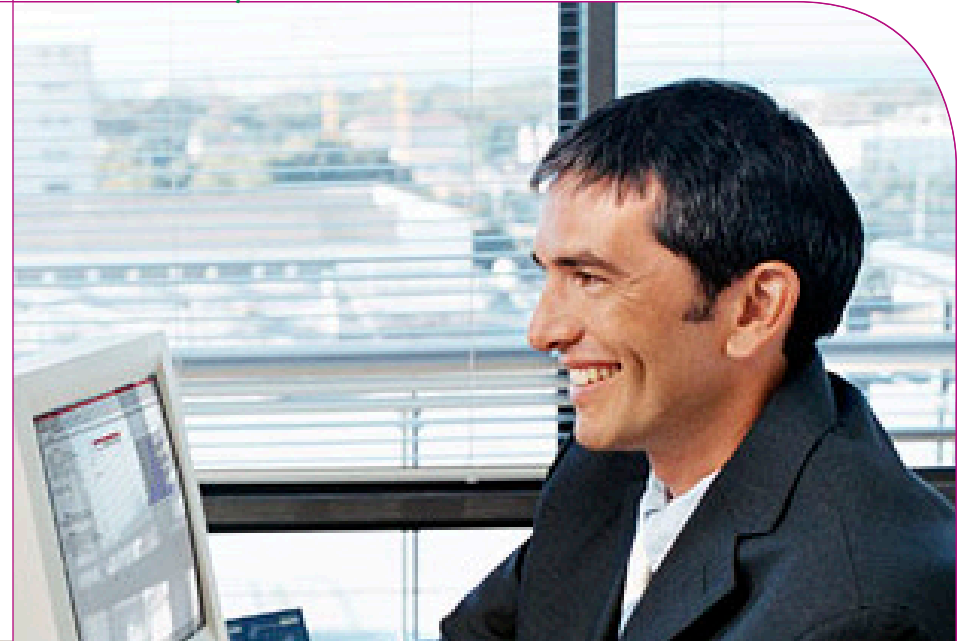
Moreover, this service is also compatible with Job Match, Staff Retention Programme as well as Staff Appraisals.

"We provide a blue chip service for a new, up and coming blue chip industry"

## Staff Retention

## Know thy staff

All our consultants are trained and authorised practitioners of Personal Profile Analysis, which enables us to assess personnel and help get the best results from your team. Using our Personal Profile Analysis we are able to come in to your department in order to assess your entire team and then recommend the best training programmes that they may require.



We also are able to do this on a quarterly basis or even on a yearly basis, the tool we use is used by many leading organisations across the world and we are trained to use this tool to make your department a better one.

**“Candidates who leave within 12 months of service can cost a client 2.5 times the candidate’s annual salary”**

## Staff Appraisals

Using our Personal Profile Analysis we can assess candidates before they attend an appraisal with their employer. We will then provide you with a full report along with a number of appropriate questions to give a more in-depth view of what your employee may be thinking of his/her present work situation or environment.

## Staff prefer to talk to third parties



Our consultants will come to your offices and conduct appraisals plus screening to get the best out of your team. Employees are often more comfortable speaking to a third party.

“We are able to provide this service by reading into somebody’s personality and then working out the best formula for you and your organisation to progress”

## Job Match

## Make sure it's the best move

Job match is a solution that everyone can use, whether you are a candidate or client. Job match is used by leading organisations worldwide and is something we use to qualify whether the candidate or the job is right for you.



Job Match involves conducting a Personal Profile Analysis on a candidate or potential employee as well as carrying out a full job specification. We will then provide you with a full report showing the areas that you or the employee need to be trained on or whether their personality and temperament are suitable.

**“By using Job Match we are able to thoroughly assess a potential employee in a way that straight forward interviews can never achieve”**

## Our Clients

## Nobody compares to us

Having in excess of 10 years' experience within the UK recruitment and the motor industries, we have been able to build an extensive portfolio of clients throughout the industry.



Some of our clients include: | Alan Day Motor Group | HR Owen Plc, | Robins & Day Motor Group | Renault Retail Group (REA) | BMW UK | Lancaster plc This is a selection of many clients that we constantly in liaison with on a daily basis.

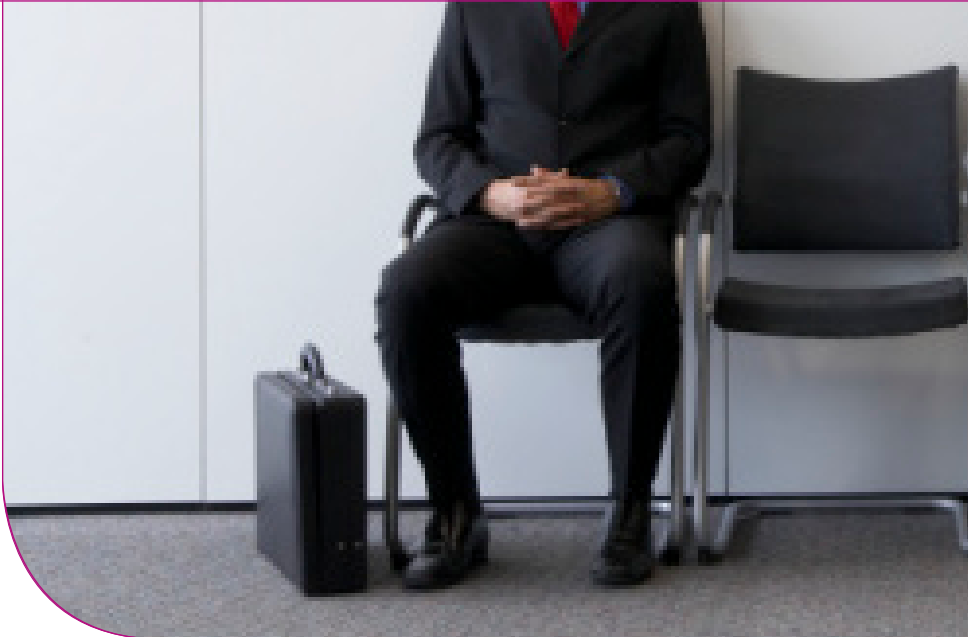
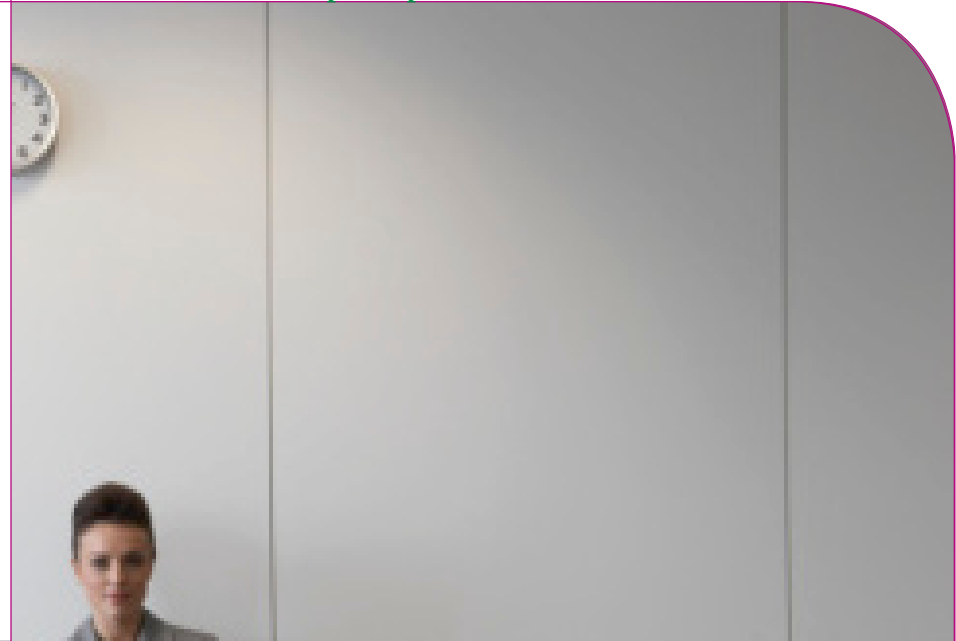
**“We have built an extensive portfolio of clients throughout the recruitment and motor industry”**

Patrick Harris (AREC, PPAP)

## Advertising Campaigns

We find the people of tomorrow

At Patrick Harris & Associates, we understand and utilise the power of advertising as we use many different media outlets. We regularly place advertisements in leading motor industry journals such as: Motor Trader and Autocar, as well as other popular recruitment titles.



We also have a significant presence on key industry websites and portals such as: Google and inautomotive.com, as a result of our online marketing. Added to this will be a soon-to-be launched radio and also billboard campaigns.

w w w . p h a r e c r u i t m e n t . c o m

---

A f t e r s a l e s   -   B o d y s h o p   -   W o r k s h o p   -   S a l e s

---

Designed by - Desired Design UK  
[www.desired-designuk.com](http://www.desired-designuk.com)

---

t : 0 2 0 8 5 5 3 7 7 6 7   -   e : i n f o @ p h a r e c r u i t m e n t . c o m

---